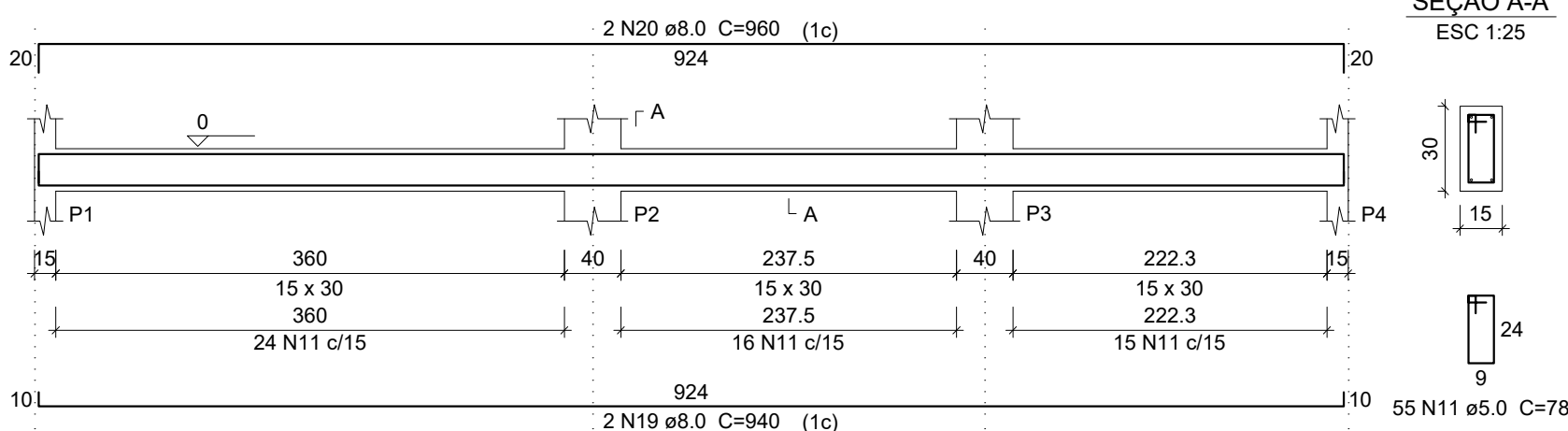
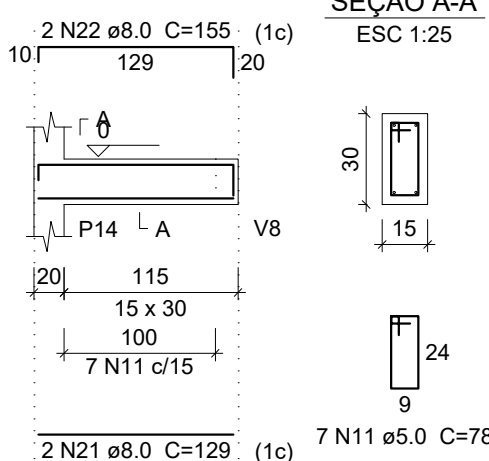


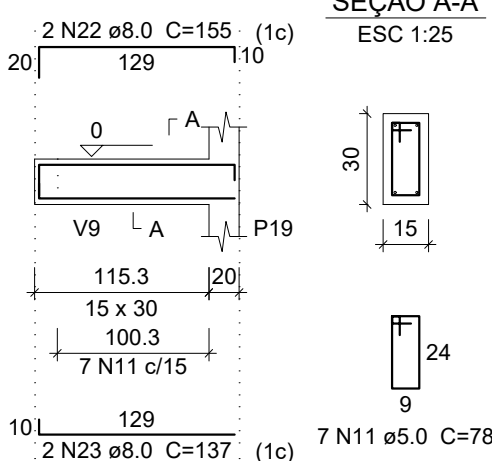
V1
ESC 1:50



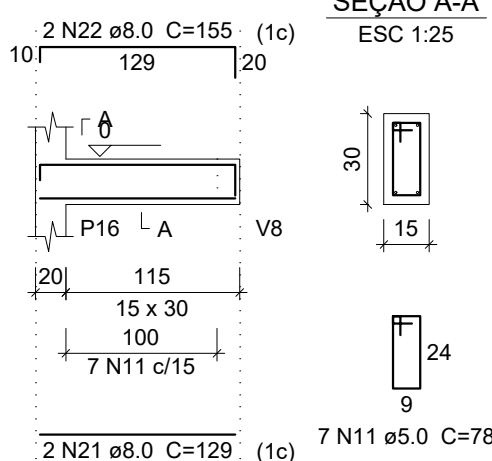
V2
ESC 1:50



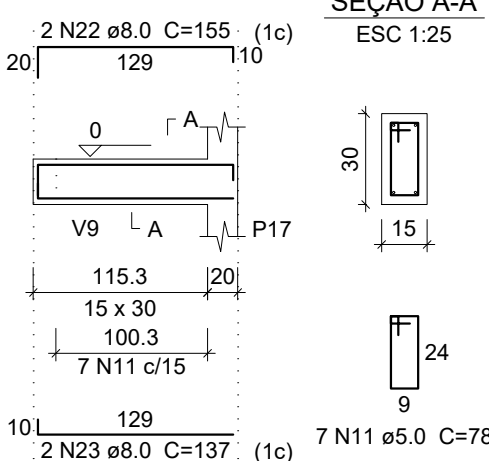
V3
ESC 1:50



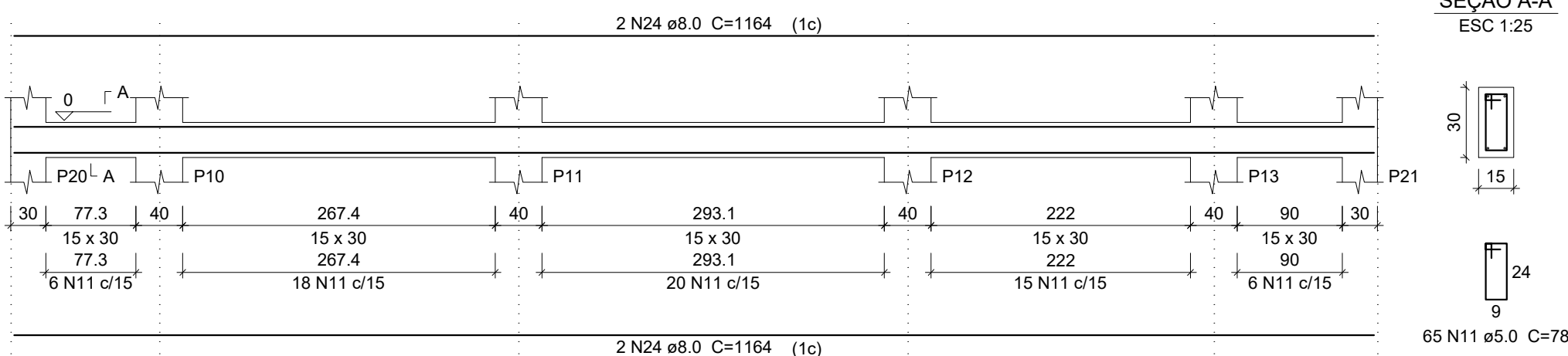
V4
ESC 1:50



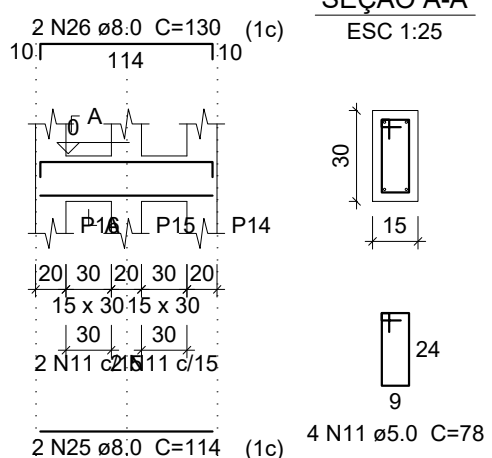
V5
ESC 1:50



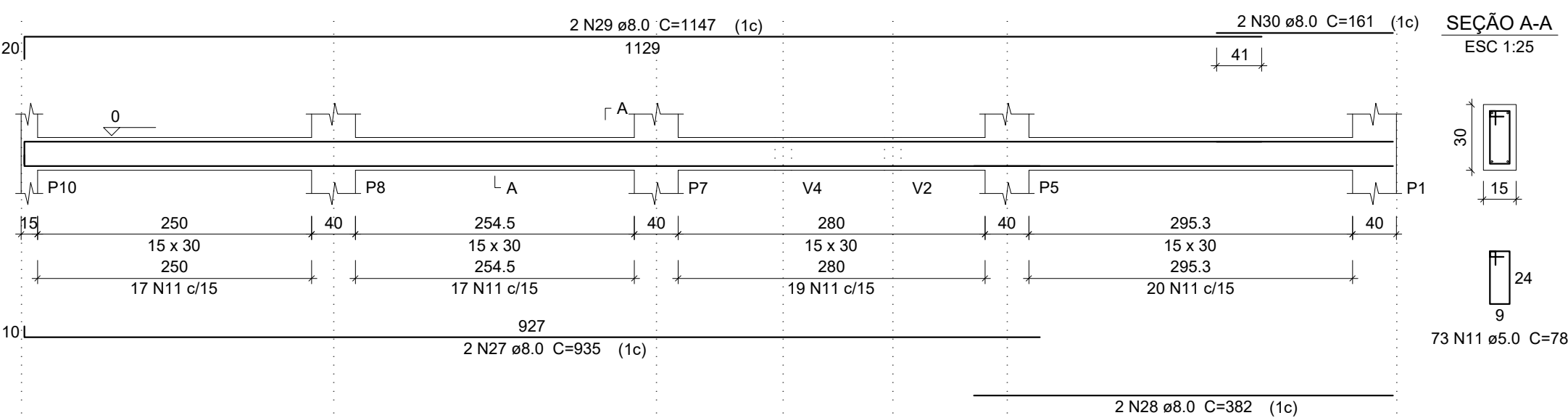
V6
ESC 1:50



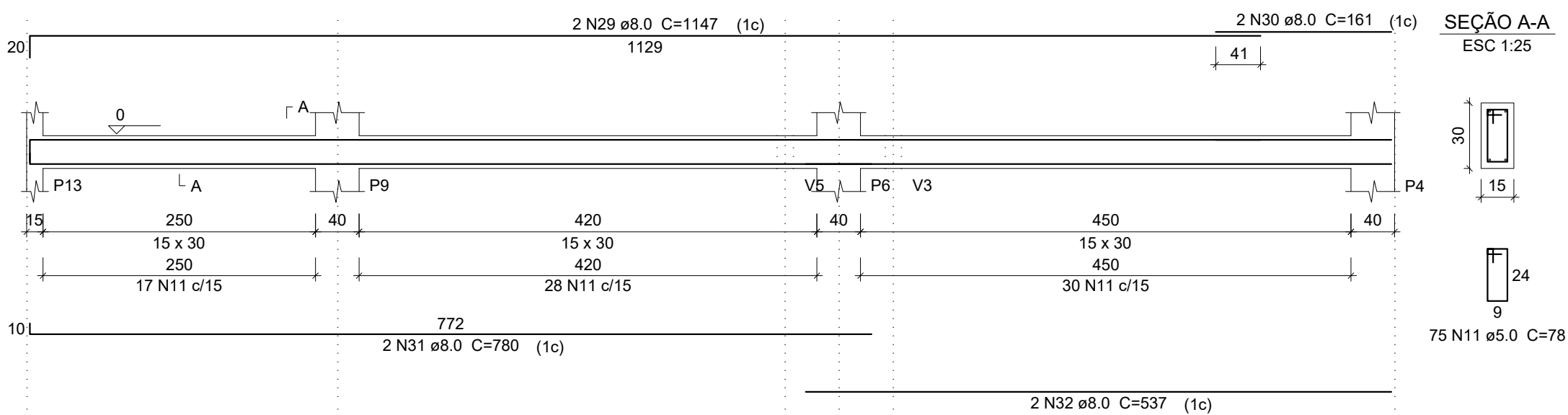
V7
ESC 1:50



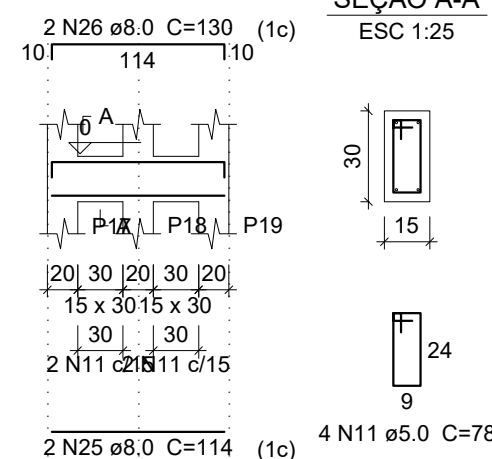
V8
ESC 1:50



V9
ESC 1:50



V10
ESC 1:50



Relação do aço

FUNDAÇÃO:	B14-15-16 7xS1 S13 V1 V2 V4 V6 V8 V10 9xP1 2xP15	B17-18-19 S3 V1 V3 V5 V7 V9 2xP2			
TÉRREO:					
AÇO	N	DIAM	Q	UNIT (cm)	C.TOTAL (cm)
CA60	1	5.0	504	98	49392
	2	5.0	504	24	12096
	3	5.0	112	108	12096
	4	5.0	112	29	3248
	5	5.0	104	68	7072
	6	5.0	22	VAR	VAR
	7	5.0	26	VAR	VAR
	8	5.0	16	732	11712
	9	5.0	26	VAR	VAR
	10	5.0	22	VAR	VAR
CA50	11	5.0	304	78	23712
	12	6.3	70	99	6930
	13	6.3	56	124	6944
	14	6.3	30	139	4170
	15	6.3	13	109	1417
	16	6.3	9	134	1206
	17	8.0	27	118	3186
	18	8.0	24	401	9624
	19	8.0	2	940	1880
	20	8.0	2	960	1920
	21	8.0	4	129	516
	22	8.0	8	155	1240
	23	8.0	4	137	548
	24	8.0	4	1164	4656
	25	8.0	4	114	456
	26	8.0	4	130	520
	27	8.0	2	935	1870
	28	8.0	2	382	764
	29	8.0	4	1147	4588
	30	8.0	4	161	644
	31	8.0	2	780	1560
	32	8.0	2	537	1074
	33	10.0	66	VAR	VAR
	34	10.0	24	VAR	VAR
	35	10.0	66	507	33452
	36	10.0	8	297	2376

Resumo do aço

AÇO	DIAM	C.TOTAL (m)	PESO + 10 % (kg)
CA50	6.3	208.7	55.6
	8.0	350.5	152.1
	10.0	533	361.5
CA60	5.0	1445.2	245
PESO TOTAL		569.2	245

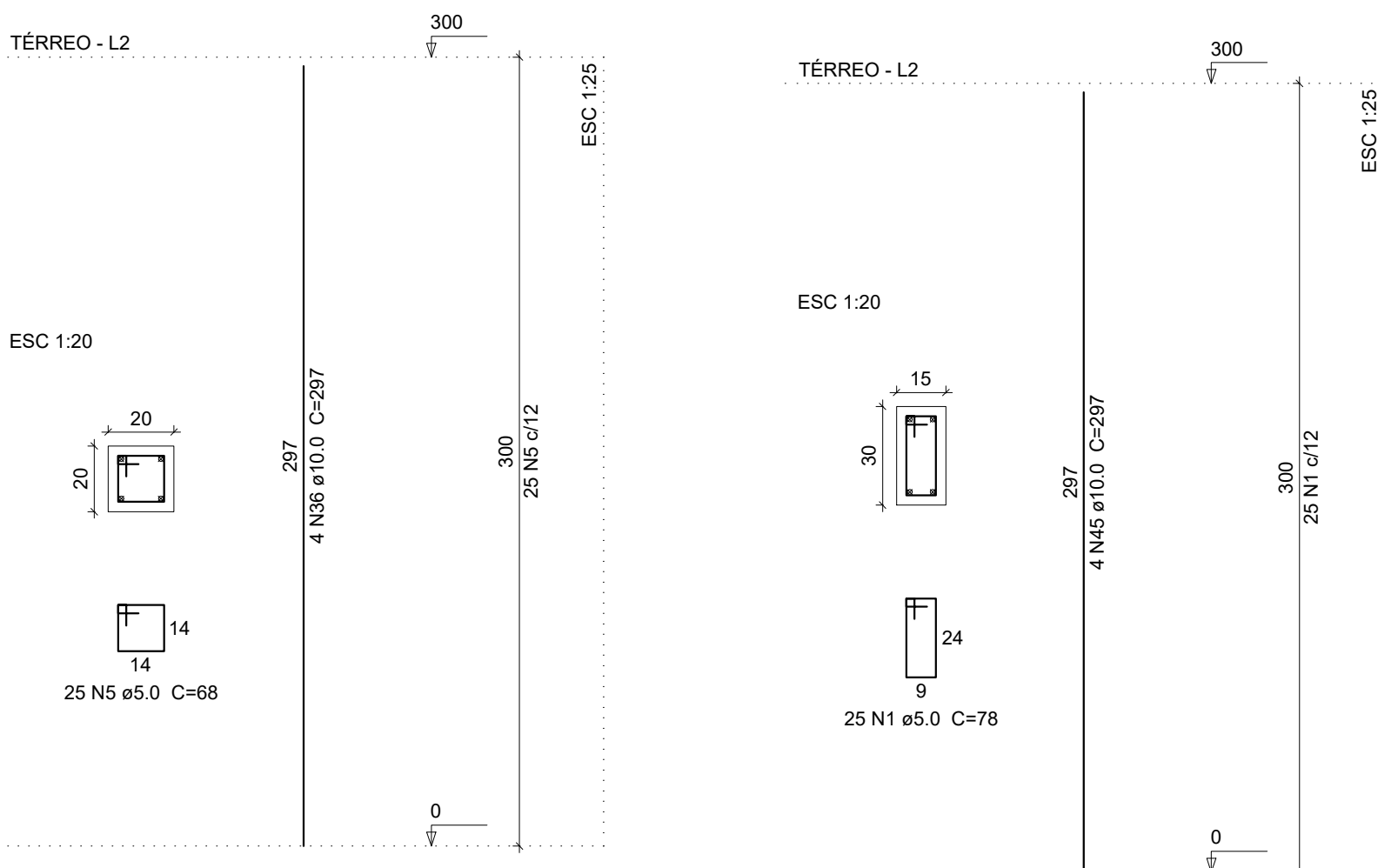
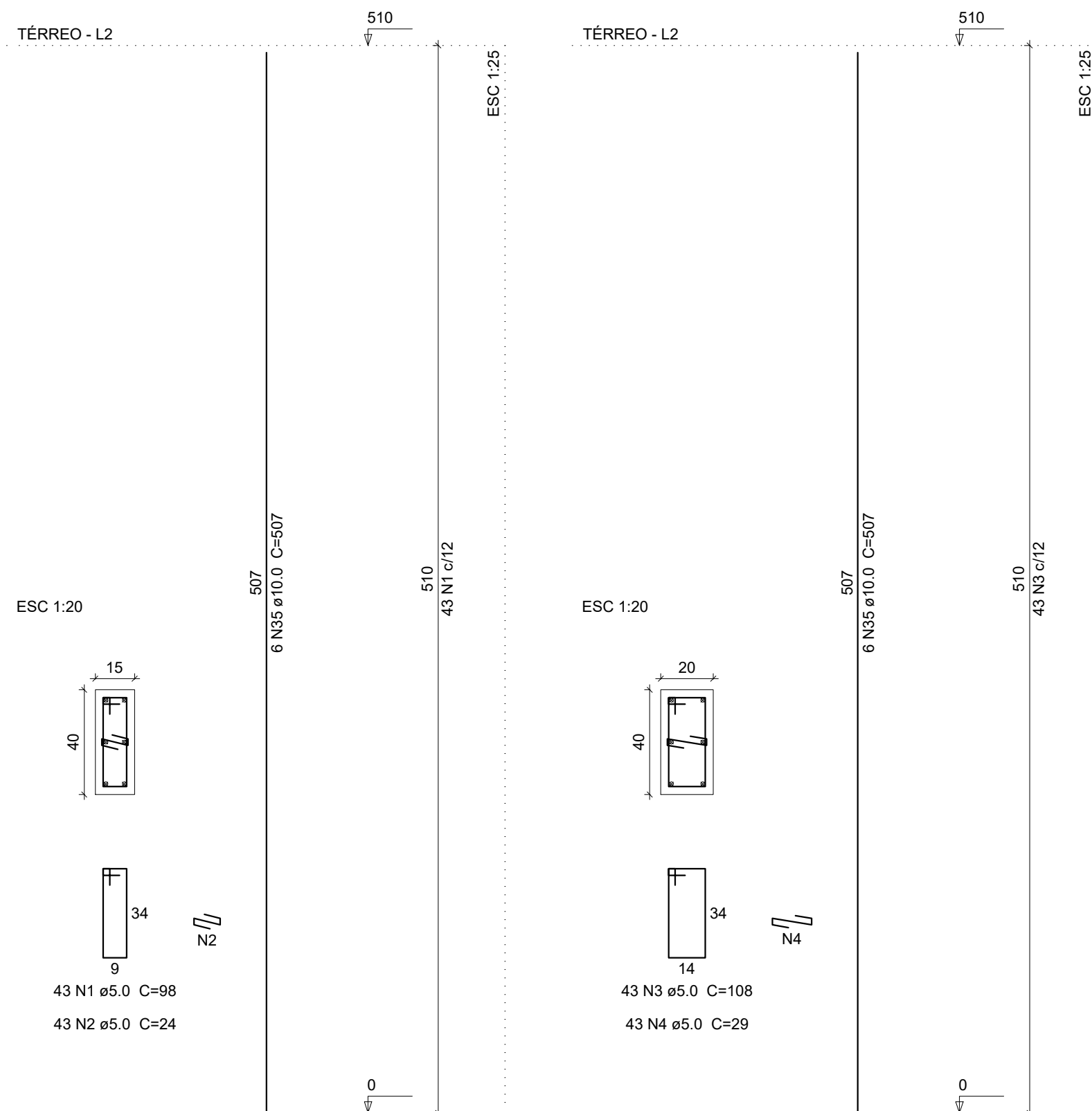
Vol. de concreto total (C-25) = 17.47 m³
Área de forma total = 158.95 m²

P1=P4=P5=P6=P7=P8=P9=P10=P11=P12=P13

P2=P3

P15=P18

P20=P21



PREFEITURA:

CAU-TO:

BOMBEIRO / NATURATINS:

PROPRIETÁRIO: **SERVIÇO SOCIAL DO COMÉRCIO - SESC - ADMINISTRAÇÃO REGIONAL NO ESTADO DO TOCANTINS**

END. OBRA: **RUA 09, QUADRA A1, AL. 03, 60 - SETOR PARQUE PRIMAVERA, GURUPI - TO.**

PROJETO: **REFORMA PARQUE PRIMAVERA- SESC GURUPI**

CONTEÚDO: **PROJETO ESTRUTURAL EM CONCRETO ARMADO - SALA MULTIUSO**

ÁREA SALA MULTIUSO: **116,7 m²**

AUTORA DO PROJETO: **ENG. TATIELLE SOARES DA SILVA**

ASSINATURAS:

SERVIÇO SOCIAL DO COMERCIO - SESC
ADMINISTRAÇÃO REGIONAL NO ESTADO DO TOCANTINS
PROPRIETÁRIO

ENG. TATIELLE SOARES DA SILVA - CREA 312390-TO
AUTORA DO PROJETO

TS

TATIELLE SOARES

ENGENHEIRA CIVIL

FOLHA

4/7

PAVIMENTO: **TÉRREO**

DESENHO: **TATIELLE SOARES**

ESCALA: **INDICADA**

DATA: **MAIO/2023**

ESTRUTURAL